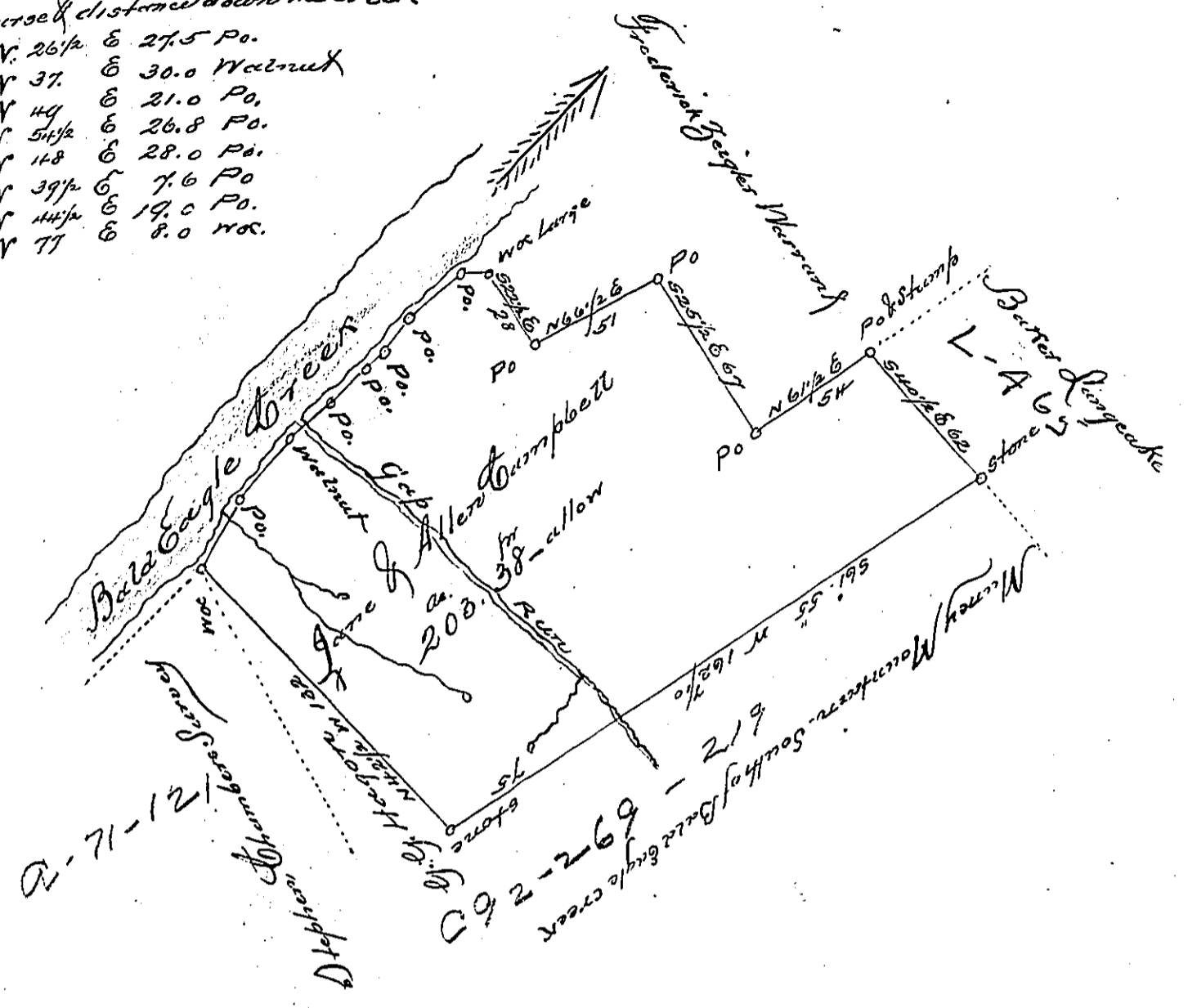


Course & distance down the Creek

N 26 1/2 E	27.5	Po.
N 37 E	30.0	Walnut
N 49 E	21.0	Po.
N 51 1/2 E	26.8	Po.
N 118 E	28.0	Po.
N 39 1/2 E	7.6	Po.
N 44 1/2 E	19.0	Po.
N 77 E	8.0	Wax.



Draft of a tract of land containing two hundred and three acres & thirty-eight perches and allowance of six per cent for Roads &c. Situated in Beech Creek Township Clinton County Surveyed the 31<sup>st</sup> day of May 18<sup>th</sup> 90, in pursuance of a warrant granted to Jane and Allen Campbell dated the 8<sup>th</sup> day of March 1786.

Francis Platt

To Jacob M. Campbell Esqr.  
Surveyor General

Examined and Approved June 18<sup>th</sup> A.D. 1890  
J. L. Eckel. C.S.

IN TESTIMONY that the above is a copy of the original remaining on file in the Department of Internal Affairs of Pennsylvania, made conformably to an Act of Assembly approved the 16th day of February, 1833, I have hereunto set my Hand and caused the Seal of said Department to be affixed at Harrisburg, this twenty fourth day of June 1904.

*Loach P. Brown*  
Secretary of Internal Affairs.